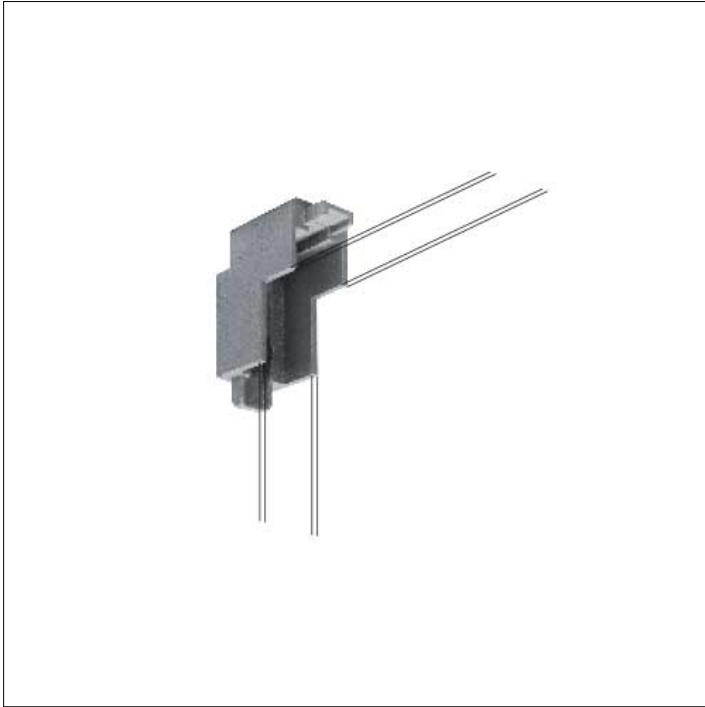


**ACCESSORY****S.2308  
90° JUNCTION ACCESSORY FOR PERPENDICULAR  
SURFACES**

Luminous angles at 90° on two perpendicular surfaces (ceiling/wall or wall/wall) can be achieved as well. Also in this case specific accessories are needed.

Accessory available in the following colors: White (cod.01), Aluminium grey (cod.14)